



# “Power Contingency Planning for Household Consumers”

**Eduardo B. Fernandez**  
*Supervising Science Research Specialist*

7<sup>th</sup> E-POWER MO – Empowering Filipinos through  
Informed Energy Plans and Policies

09 October 2018 | Grand Xing Imperial Hotel, Iloilo City



# Power Contingency Planning for Household Consumers





# TOPIC COVERAGE

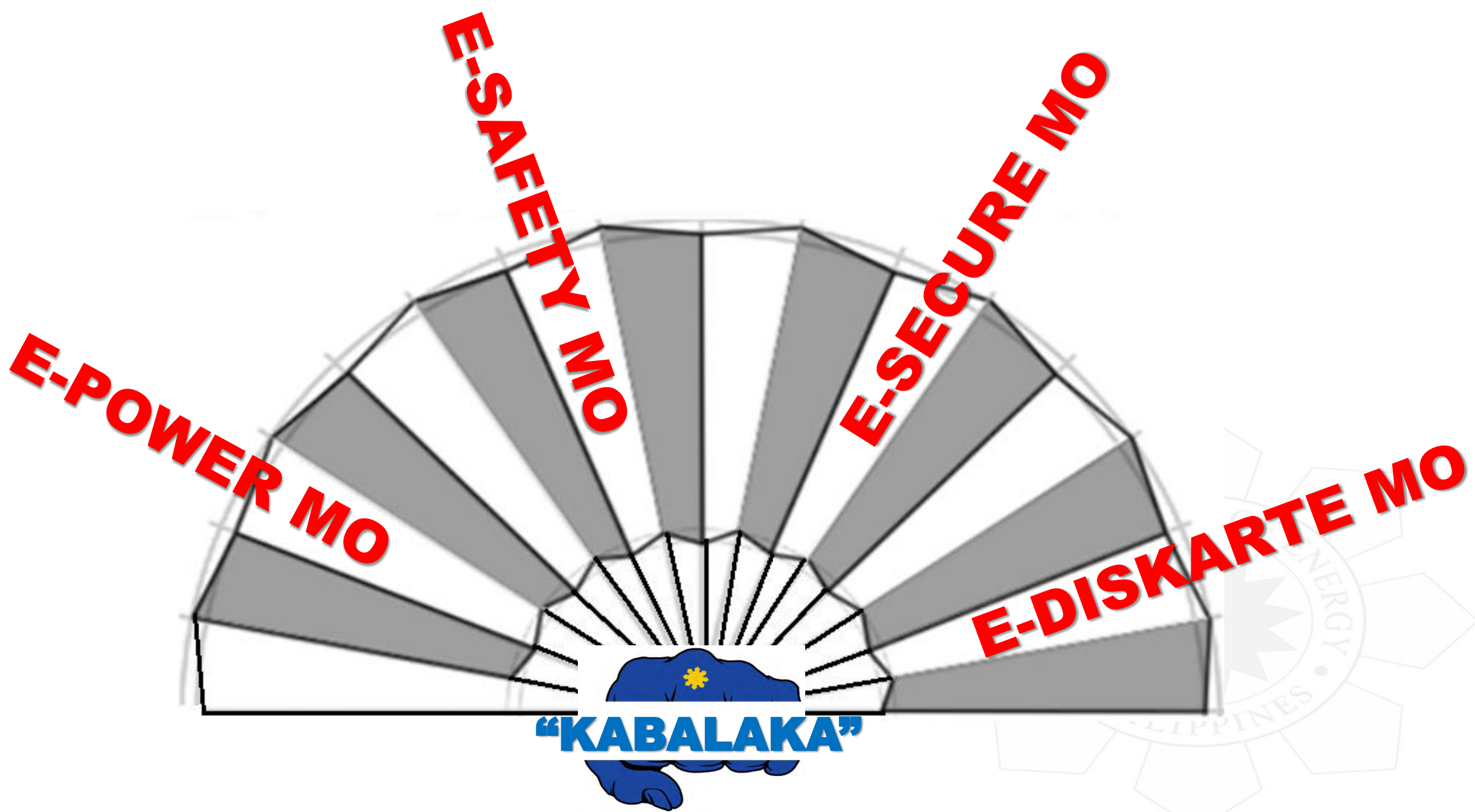
- **What is E-Power Mo?**
- **Current Initiatives and Strategies**
- **Enjoining Community Safety Protocols**
- **Disaster Risk Reduction and Community Security**





# BACKGROUND

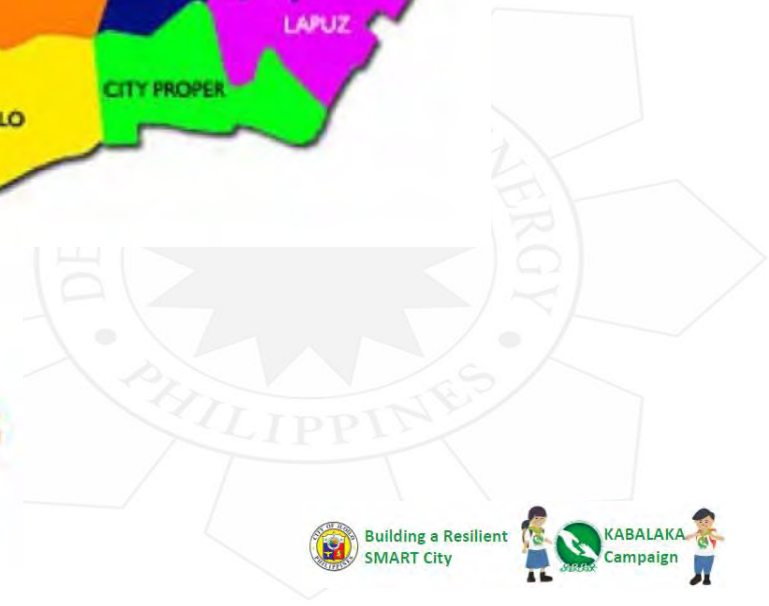




# “KABALAKA”



## Western Visayas



2008 Typhoon Frank



Water shortage

Flooding



155/180 fire-prone barangays

1948 Lady Caycay Earthquake



25 coastal barangays prone to storm surge



Building a Resilient SMART City



KABALAKA Campaign



# Losses and Damages Caused by Typhoon Frank



254,275



28



50,873



\$16.41M



\$10.07 M



\$ 3.7M







# E-DISKARTE MO



# [ REPUBLIC ACT No. 11039 ]

## AN ACT INSTITUTIONALIZING THE ELECTRIC COOPERATIVES EMERGENCY AND RESILIENCY FUND AND APPROPRIATING FUNDS THEREFOR

### Duterte signs law on electric cooperatives emergency fund

Published July 3, 2018 6:31pm

President Rodrigo Duterte has signed into law a measure providing support to electric cooperatives adversely affected by calamities.

Approved on June 29, Republic Act 11039 mandates the creation of an Electric Cooperatives Emergency and Resiliency Fund (ECERF) to be managed and administered by the National Electrification Administration (NEA).

An initial fund of P750 million shall be taken from the National Disaster Risk Reduction and Management Fund, and then be released to the NEA Quick Response Fund for proper disbursements to qualified electric cooperatives.

“In case of a deficiency of the fund, the NEA shall seek ... allocation of a supplementary budget from the NDRRM Fund, subject to approval by the President of the Republic of the Philippines,” the law stated.



DEPARTMENT CIRCULAR NO. DC 2018-01-0001 <sup>rv</sup>

ADOPTION OF ENERGY RESILIENCY IN THE PLANNING AND PROGRAMMING  
OF THE ENERGY SECTOR TO MITIGATE POTENTIAL IMPACTS OF  
DISASTERS

# DOE INSTITUTIONALIZES ENERGY RESILIENCY POLICY

MANILA, Philippines — ***Energy Secretary Alfonso Cusi has institutionalized the adoption of a policy on energy resiliency to secure energy-related facilities as the country continues to reel from a number of natural calamities year in and out.***

***The policy “Adoption of Energy Resiliency in the Planning and Programming of the Energy Sector to Mitigate Potential Impacts of Disasters” would aid industry partners to plan and address potential impacts of disasters since the Philippines is one of the most vulnerable countries to disasters.***



# ANTI-PILFERAGE ACT



**R.A. 7832**  
**"Anti-Pilferage Act"**

ISANG BATAS NA MAHIGPIT AT DIREKTANG IPINAGBABAWAL ANG PAGNANAKAW NG KURYENTE SA PAMAMAGITAN NG PAGGAMIT NG JUMPER, FLYING CONNECTION, AT IBA PA. GAYUN DIN ANG PAGNANAKAW SA MGA MATERYALES NA GINAGAMIT SA TRANSMISYON O DISTRIBUSYON NITO.

**KRIMEN ang pagnanakaw ng KURYENTE!**

MAKISAHAGI SA LABAN KONTRA SA PAGNANAKAW NG KURYENTE!

IGMAMAG O MAG TEST SA BUKANG SA ANTI-PILFERAGE ACT.  
173792334 / 0917579881 / 0917579881 / 0917579881  
09175767761  
8 BLK - ERMA - 14  
www.epa.gov.ph

**R.A. 7832**  
**"ANTI-PILFERAGE ACT"**

ISANG BATAS NA MAHIGPIT AT DIREKTANG IPINAGBABAWAL ANG PAGNANAKAW NG KURYENTE SA PAMAMAGITAN NG PAGGAMIT NG JUMPER, FLYING CONNECTION, AT IBA PA. GAYUN DIN ANG PAGNANAKAW SA MGA MATERYALES NA GINAGAMIT SA TRANSMISYON O DISTRIBUSYON NITO.

**WALANG**  
**Walang**

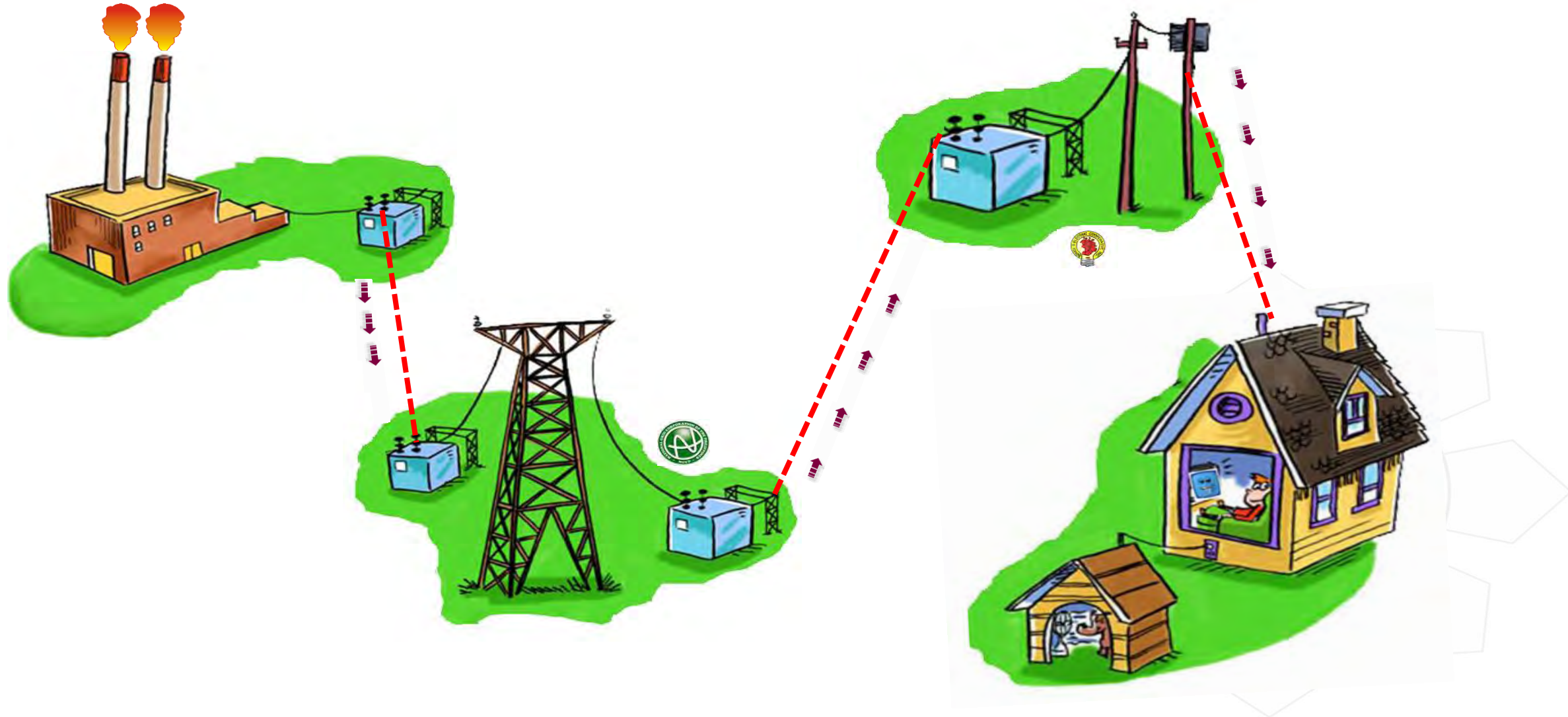




# E-POWER MO



# Power Demand and Supply Chain





Talaka kda weekend brownout nlg di ya s pavia sa iban nga lugar 5 seconds lg ang brownout dri ya 8 hrs gd!! Kesyu guba poste, kesyu maintainance.. 😊😊😊

Hay naku mainit naman ini... Dugay pa gd mag siga..

What ever your schedule time do it seriously. Sang nagligad nag anonsyo kamo 8:00am gin brown out nyo six o clock am. Hoy mga talahoron be in your words.



walang pagbabago isli nyo lang na bi tingub ..



**PECO**  
**ILECO I**  
**ILECO II**  
**IELCO III**  
**CAPELCO**  
**GUIMELCO**  
**AKELCO**  
**ANTECO**






**Legend**

Power (Locations)

-  Geothermal Plant
-  Power Barge
-  Diesel Power Plant
-  Electric Co./Coop.
-  Hydro Electric

Power (Grid)

-  138 kv T/L
-  69 kv T/L
-  Submarine Cable






<b>POWER PLANT FACILITY NAME</b>	<b>CAPACITY (MW)</b>	<b>LOCATION MUNICIPALITY/ PROVINCE</b>
<b>COAL</b>		
<i>PEDC Coal U1</i>	<i>83.7</i>	<i>Iloilo City, Iloilo</i>
<i>PEDC Coal U2</i>	<i>83.7</i>	
<i>PEDC Coal U3</i>	<i>150</i>	
<i>PCPC</i>	<i>135</i>	<i>Concepcion, Iloilo</i>
<b>DIESEL</b>		
<i>AVON-NABAS</i>	<i>6.4</i>	<i>Nabas, Aklan</i>
<i>AVON-NEW</i>		
<i>WASHINGTON</i>	<i>4.2</i>	<i>New Washington, Aklan</i>
<i>PANAY DPP I</i>	<i>15</i>	<i>Dingle, Iloilo</i>
<i>PANAY DPP III</i>	<i>74</i>	<i>Dingle, Iloilo</i>
<i>PB 101</i>	<i>18</i>	<i>Iloilo</i>
<i>PB 102</i>	<i>24</i>	<i>Obrero, Iloilo</i>
<i>PB 103</i>	<i>0</i>	<i>Estancia, Iloilo</i>
<b>GAS TURBINE</b>		
<b>GEOTHERMAL</b>		

<b>POWER PLANT FACILITY NAME</b>	<b>CAPACITY (MW)</b>	<b>LOCATION MUNICIPALITY/ PROVINCE</b>
<b>HYDROELECTRIC</b>		
<i>Small Hydroelectric Plants</i>		
<i>VILLASIGA HEPP</i>	<i>8</i>	<i>Bugasong, Antique</i>
<i>Mini Hydroelectric Plants</i>		
<i>Micro Hydroelectric Plants</i>		
<b>BIOMASS</b>		
<b>SOLAR</b>		
<i>COSMO SOLAR</i>	<i>5</i>	<i>Miag-ao, Iloilo</i>
<b>WIND</b>		
<i>NABAS WIND Ph1</i>	<i>36</i>	<i>Nabas, Aklan</i>
<i>TAREC</i>	<i>54</i>	<i>San Lorenzo, Guimaras</i>
<b>DIESEL</b> (embedded)		
<i>ENERVANTAGE DPP</i>	<i>8</i>	<i>Panit-an, Capiz</i>
		<i>San Miguel, Jordan,</i>
		<i>Guimaras</i>
<i>GUIMARAS POWER</i>	<i>3</i>	
<i>PANAY POWER CORP.</i>	<i>78.8</i>	<i>Ingore, Lapaz, Iloilo City</i>

Natural Gas, Hydro, Mini Hydroelectric Plants, Micro Hydroelectric Plants, Biomass





**ILECO-1 ADVISORY**

**POWER INTERRUPTION**

Maintenance activities in parts of Iloilo on Tuesday, July 24, 2018.

TIME	AFFECTED	REASON
8:00AM - 4:00PM	<b>ALIMODIAN</b> WHOLE MUNICIPALITY EXCEPT BAGUINGIN-LANOT  <b>SAN MIGUEL</b> CONSOLACION IGAMBO PART OF SAN JOSE TO POBLACION, SAN MIGUEL POBLACION SAN ANTONIO STA. CRUZ STA. TERESA STO. NIÑO	UPDATING AND UPGRADING OF PRIMARY DISTRIBUTION LINES AT SIT, MALIPAYON, SAN MIGUEL TO MANGUNA, CABATUAN AND SAN JOSE TO POBLACION, SAN MIGUEL

- uprating of lines
- clearing of distribution lines
- installation of mid poles
- massive clearing & correction of lines
- replacement of rotten poles
- uprating & upgrading of primary distribution lines
- clearing of lines requested by “Hatchery”
- uprating/upgrading of primary lines
- massive clearing of 3-phase backbone lines

- correction of distribution lines & replacement poles & dilapidated lines
- massive clearing & correction of lines
- relocation of poles affected by DPWH road widening
- emergency interruption due to retapping of lines of Substation
- massive clearing & correction of distribution lines, replacement of poles & dilapidated lines
- clearing of lines requested by “Hatchery”
- Emergency shutdown of the 69kV Sta.Barbara - Miag-ao line by NGCP
- massive clearing of 3-phase backbone lines, correction of distribution lines & replacement of rotten & dilapidated poles



# ILOILO III ELECTRIC COOPERATIVE, INC.

Brgy. Preciosa, Sara, Iloilo

Telephone Numbers:  
(033)

Main Office  
392-0388  
392-0202  
392-0104

Sara  
Area Office  
392-0034  
392-0350

Northside  
Area Office  
362-0009  
362-0469

Poston  
Area Office  
397-0637

Email Address: ileco3@gmail.com

Website: www.ileco3.com

## POWER ADVISORY

Pahibalo sa mga katapo-konsumidores nga may patigayunon nga scheduled power interruption ang ILECO III sa **CARLES (Gigantes Island only)** agud mag-hiwat sang pole relocation, clearing of lines kag pipe installation sa primary lines.

Ang schedule amo ang masunod:

DATE & TIME	AFFECTED AREA/S
<b><u>AGOSTO 4, 2018 (SABADO)</u></b> <b><u>8:00 AM – 5:00 PM</u></b>	<ul style="list-style-type: none"> <li>• Brgy. Asluman</li> <li>• Brgy. Gabi</li> <li>• Brgy. Granada</li> <li>• Brgy. Lantangan</li> </ul>

Gina-abisuhan gid ang mga resort owners kag mga turista nga magabisita sa nasambit nga lugar nga mag-preparar.

## POWER ADVISORY

Pahibalo sa mga katapo-konsumidores sang ILECO III sa nagluntad nga mga Power Interruption sa **NATIVIDAD AREA COVERAGE** sang **JULY 30, 2018**:

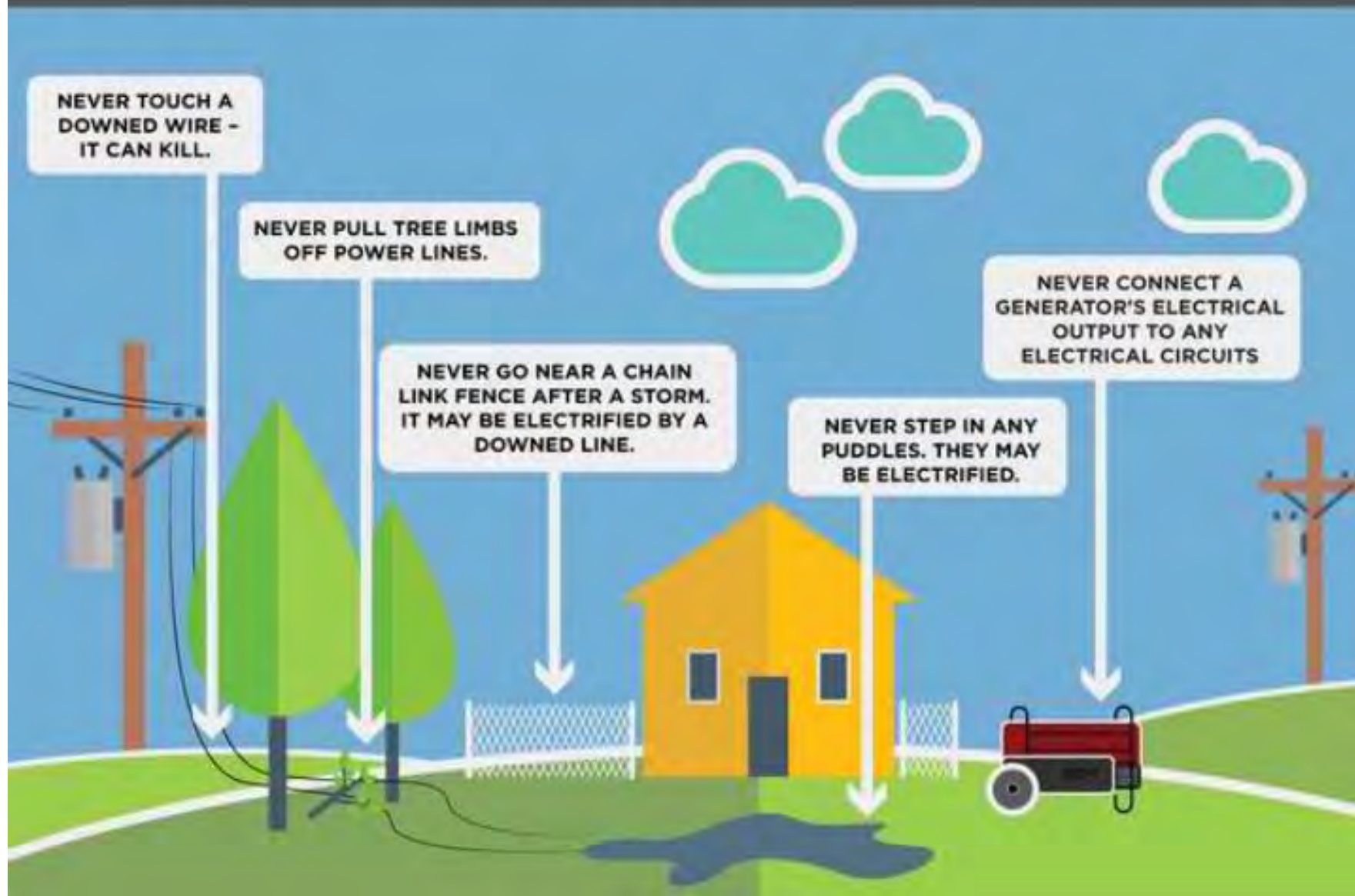
Affected Area/s	Time of Complaint	Time Acted	Cause of Interruption	Action Taken
Poblacion, Anilao	5:00 AM	6:00 AM	Damaged fuse link due to animal contact	Replaced fuse link
Posolon, San Rafael	8:00 AM	9:00 AM	Current surge due to lightning	Replaced fuse link
S. Cabas-an, San Andres, San Rafael	12:00 PM	1:03 PM	Current surge due to lightning	Replaced fuse link
S.Matingkong, Juanico, Banate	4:18 PM	5:50 PM	Damaged fuse link	Replaced fuse link



# E-SECURE MO



# SAFETY TIPS: AFTER THE STORM



# Tree Maintenance Cutting



# Stubborn landowners delay NGCP Work

by Riza Olchondra, 20 August 2015

from [Philippine Daily Inquirer](#)

Transmission system operator National Grid Corp. of the Philippines (NGCP) said problems with uncooperative landowners have hampered the repair of vital lines, similar to a case in the Iloilo province.

Linemen were only able to fully restore power transmission services in 15 municipalities in Iloilo and Antique past 3 a.m. last Aug. 9 after dealing with an uncooperative landowner, the firm said.

The repair of the entire line, however, could have been completed earlier had a landowner immediately allowed the inspection and repair of a toppled structure within his property.

**PRIVATE**  
**No public right of way**





# PILFERAGE

NGCP IS SEEKING YOUR  
HELP IN OUR **CAMPAIGN**  
**AGAINST PILFERAGE &**  
**THEFT** OF TOWER  
PARTS.



**SIR, naka-  
“FLYING  
CONNECTION”  
po kayo,  
ilegal po yan.**

**CLICK!** to learn more  
about illegal  
connections...

Ha! Anong **FLYING  
CONNECTION?**  
Paano naman  
naging ilegal?







**Street lights always on, permanently off, blinking needs replacement**





# NGCP tower collapses as fire engulfs houses in Alabang



# Bombing of Transmission Line Towers





Never fly a kite near any power lines and electric poles.

Do not go near any downed power lines; always assume that it is energized and dangerous. Keep your feet together and on the ground at all times



Avoid going under the power lines while carrying long logs of wood or anything that will come near to it.

Never climb any electric poles and transmission towers.



It is illegal to plant trees near or below lines and electric poles.

Report downed power lines immediately. Contact the nearest NONECO office which is available 24 hours a day, 7 days a week.



# Line Safety Tips

Our line safety reminders and tips provide the necessary awareness to avoid possible accidents that may occur in regards with our power lines.

For your complaints, requests and concerns...  
i-text si GM DAN!!!

Text your Name/ Account No./Address/Concern, Request and Complaint

and send to **0998-968-0438**

## Area Office Hotlines:

- |   |   |
|---|---|
| E.B. Magalona Area Office - 0949-507-6440 | Sagay Area Office - 213-5467              |
| Victorias Area Office - 399-2781 (PLDT)   | Escalante Area Office - 0917-872-9032     |
| - 717-7822 (Globe)                        | San Carlos Area Office - 729-4394 (Globe) |
| Cadiz Area Office - 0910-923-3862         | 312-5687 (SACATEL)                        |



**E-SAFETY MO**



An electrical octopus is a dangerous animal to keep around the house.

DO NOT OVERLOAD  
OUTLETS WITH TOO  
MANY THINGS  
PLUGGED INTO THEM.





**Electricity has the**  
**POWER TO KILL**

# Electrical Safety

©ElementarySafety.com

IF YOUR TOAST GETS STUCK IN THE TOASTER, UNPLUG IT BEFORE YOU USE A FORK OR KNIFE TO GET IT OUT.





Do not use anything with a frayed or damaged cord. They could shock you or even start a fire!



©ElementarySafety.com

Bud

©ElementarySafety.com

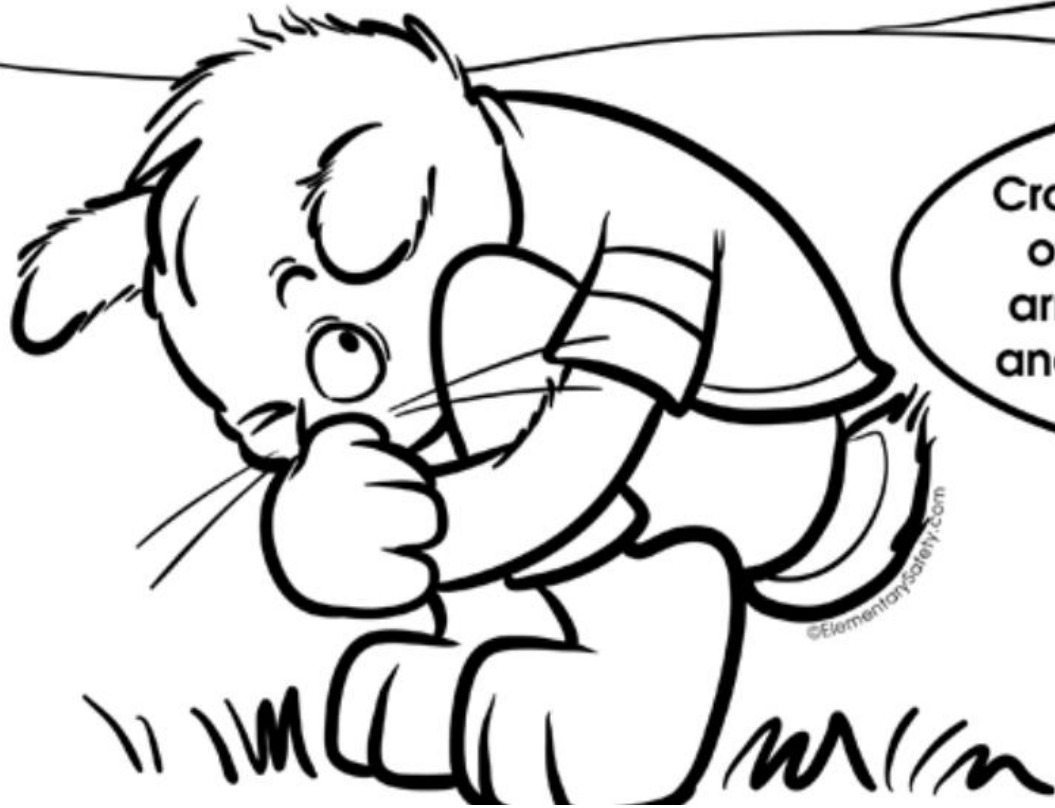


You may know that lightning is about to strike close by if you feel your skin tingle or your hair standing on end.



©ElementarySafety.com

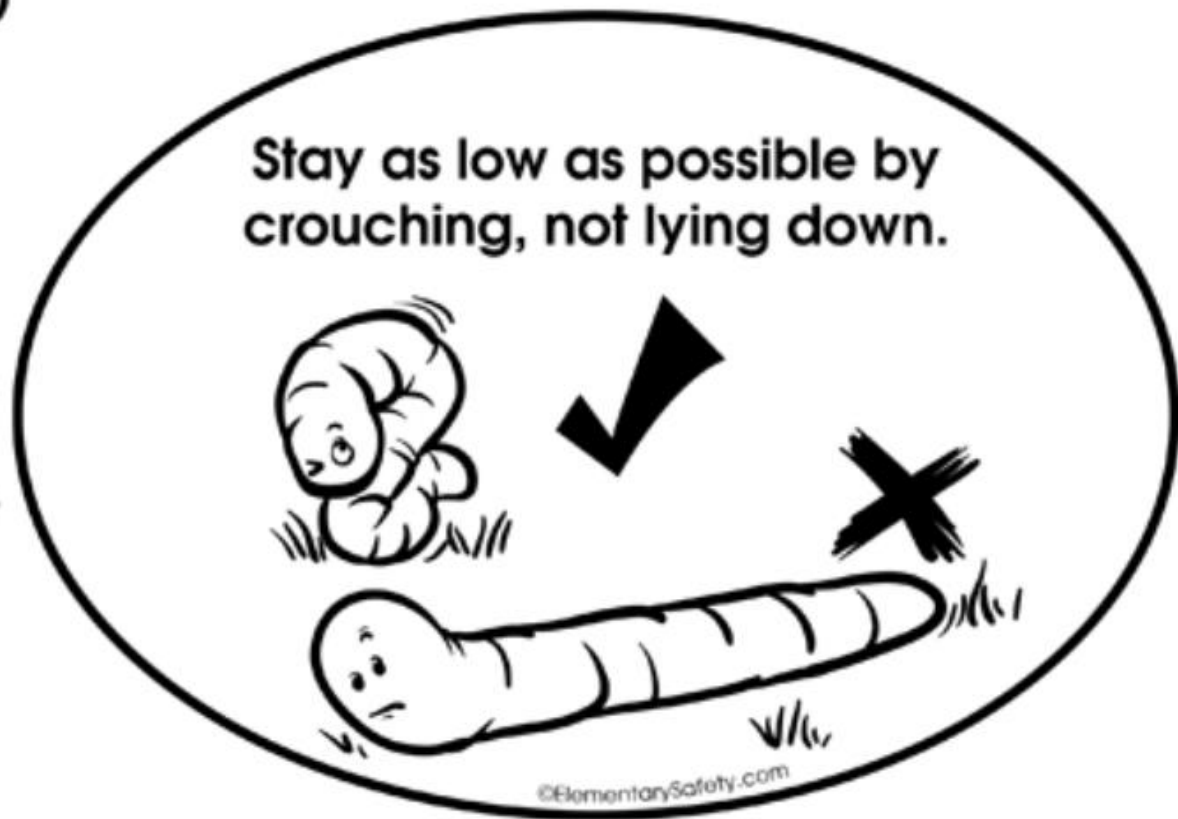
Crouch down on the balls of your feet, wrap your arms around your knees and put your head down.



©ElementarySafety.com

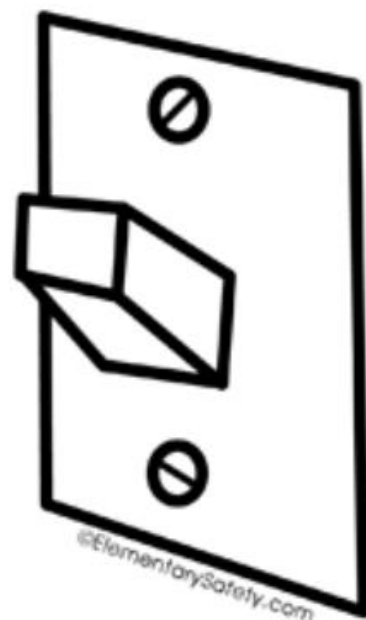


If you are caught outside in an electrical storm, stay away from high stand structures.



Stay as low as possible by crouching, not lying down.

Always make sure your hands are dry before touching an outlet, a switch or any appliance that is plugged in.



©ElementarySafety.com

©ElementarySafety.com

Stay away from fallen electrical lines and report them immediately!



## SAFETY EQUIPMENT



**Emergency  
safety shower.**  
Keep this area clear.

Just Say ...

# NO To Electrical Hazards

Before you turn it on,  
make sure you say no  
to the following:

- ✓ Are outlets, motors or circuits overloaded?
- ✓ Are cords running near heat or water sources?
- ✓ Are cords twisted or tangled?
- ✓ Do I see sparks or smoke?
- ✓ Are my hands wet?
- ✓ Am I wearing any metal jewelry?





# Switch to Safety

The home is over 40 years old and has aluminum wiring, but has not recently undergone a safety inspection by an electrician.



The wall plate is hot to the touch.

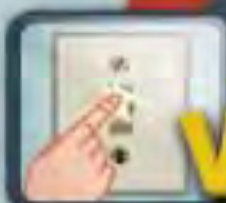
Lights get dimmer or brighter when other appliances turn on or off.



There is discoloration of or around the switch plate.



You often experience a shock when operating the switch.



## Don't Take These

# Warning Signs Lightly



Lights dim and/or flicker without cause.

The switch leans to one side or feels loose when operating.



You hear crackling, popping, or buzzing from your outlet.



You detect an odor when a switch is used.



Often breakers trip or fuses blow when the switch is turned on.



If your lighting control points are characterized by **any of the above**, have your home's electrical system inspected by a qualified electrician **as soon as possible**.

# When Thunder Roars, Go Indoors!



**STOP all activities.**

Seek shelter in a substantial building  
or hard-topped vehicle.

Wait 30 minutes after the storm to  
resume activities.



[www.lightningsafety.noaa.gov](http://www.lightningsafety.noaa.gov)



# WHEN THUNDER ROARS, GO INDOORS!



## DID YOU KNOW?

A significant lightning threat extends outward from the base of a thunderstorm cloud 6 to 10 miles. Just because a thunderstorm has moved out of your area does not mean the lightning threat is over.



30 min

**Stop ALL outdoor activities and wait  
thirty minutes after the last clap of  
thunder before resuming activities.**

If you see lightning or hear thunder, seek shelter inside immediately. Seeking shelter beneath sheds or under baseball dugouts IS NOT safe. Also, DO NOT stand underneath tall objects, like trees. No place outside is safe from a thunderstorm. Strong sturdy buildings with plumbing and wiring offer the most protection. Office buildings, schools, and homes are also great safe places. Remember to stay away from windows and doors, and do not use anything that conducts electricity, including corded phones and water faucets. A hard-topped vehicle is an option if a building is not available, as long as you avoid making contact with the metal inside the vehicle.



We have the **E**nergy Ability.

# THANK YOU!



(632) 840-1773



2018eduke@gmail.com



[www.doe.gov.ph](http://www.doe.gov.ph)



//doe.gov.ph



@doe ph







We have the **E**nergy Ability.

# THANK YOU!



(632) 840-1773



2018eduke@gmail.com



[www.doe.gov.ph](http://www.doe.gov.ph)



//doe.gov.ph



@doe\_ph

