

Energy Investment Forum 2019

3 December 2019
Hilton Manila Hotel, Pasay City

SREC Solar Hybrid Power Plant, Brgy. Cabayugan, Puerto Princesa City

WEnergy Global

Systems Integration - Customized Hybrids - Micro Grids

Solar PV-Battery-Diesel Hybrid Power Plant plus Micro Grid

24/7 power with almost 50% clean solar PV in the energy mix



Asset Development, Building, Ownership and Operation

RE/Hybrid power generation & micro grids
FIT Projects with Innovative RE Technologies



EPC and Operations Management

Rooftop, Ground-mounted and Floating Solar PV, Tidal, River Run-off Power Generation Systems with Energy Storage Systems

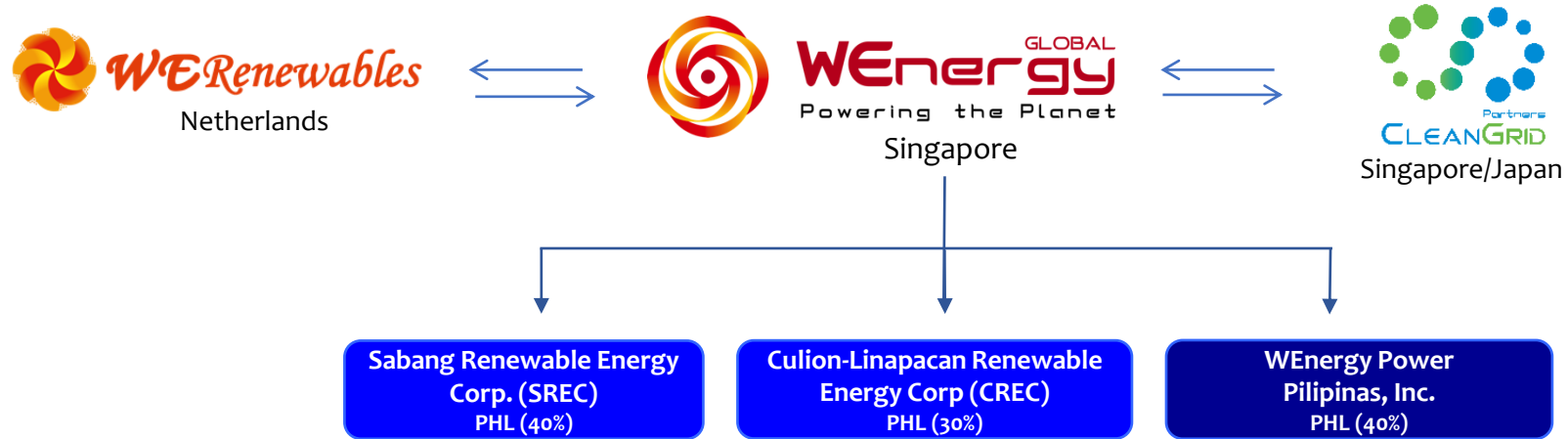


Strategic Consultancy

Engineering Design and Financial Feasibility Studies

Operating Environment of WEnergy Global

Set Up for Excellence in Renewable Energy Solutions and PowerGrids



Partners:



TEPCO Power Grid



ICMG



Legal Advisors:



WEnergy Global

Systems Integration - Customized Hybrids - Micro Grids



Solar street light project, Bangkok



Lao-PDR RROT feasibility study



PUB Singapore feasibility study



Nusa Tenggara Timur pre-feasibility study



More than 1,100 kWp of Rooftop Solar PV Installed

Awards and Achievements

Recognition of Leadership in Innovation and Sustainability



#1 Erasmus Energy Award, Jun 2014

Erasmus Centre for Future Energy Business,
Rotterdam School of Management, The Netherlands

Selected out of over 200 submissions for innovative and sustainable energy concept & business model of SREC



Singapore APEX Corporate Sustainability Award, Oct 2016

Singapore Business Federation / UN Global Compact Singapore Network
Category: Clean Technologies



Dr Albert Winsemius Award, Mar 2016

Dutch Chamber of Commerce Singapore
Innovation & Sustainability
Category: Rising Star

Solar PV-Battery-Diesel Hybrid Power Plant Plus Micro Grid

24/7 power with an average 50% clean solar PV in the energy mix

Electrifying Barangay Cabayugan (“Sabang”), Puerto Princesa City, Palawan, The Philippines



1.4 MWp

SOLAR PV
POWER PLANT

1.2 MW

DIESEL
GENERATORS

2.3 MWh

DURABLE BATTERY

14 km

MICRO GRID with
SMART METERS

650

OFFTAKERS
SMALL & LARGE

25,700

METRIC TONS CO₂
SAVINGS OVER
20 YEARS









Key Considerations: Investment Environment

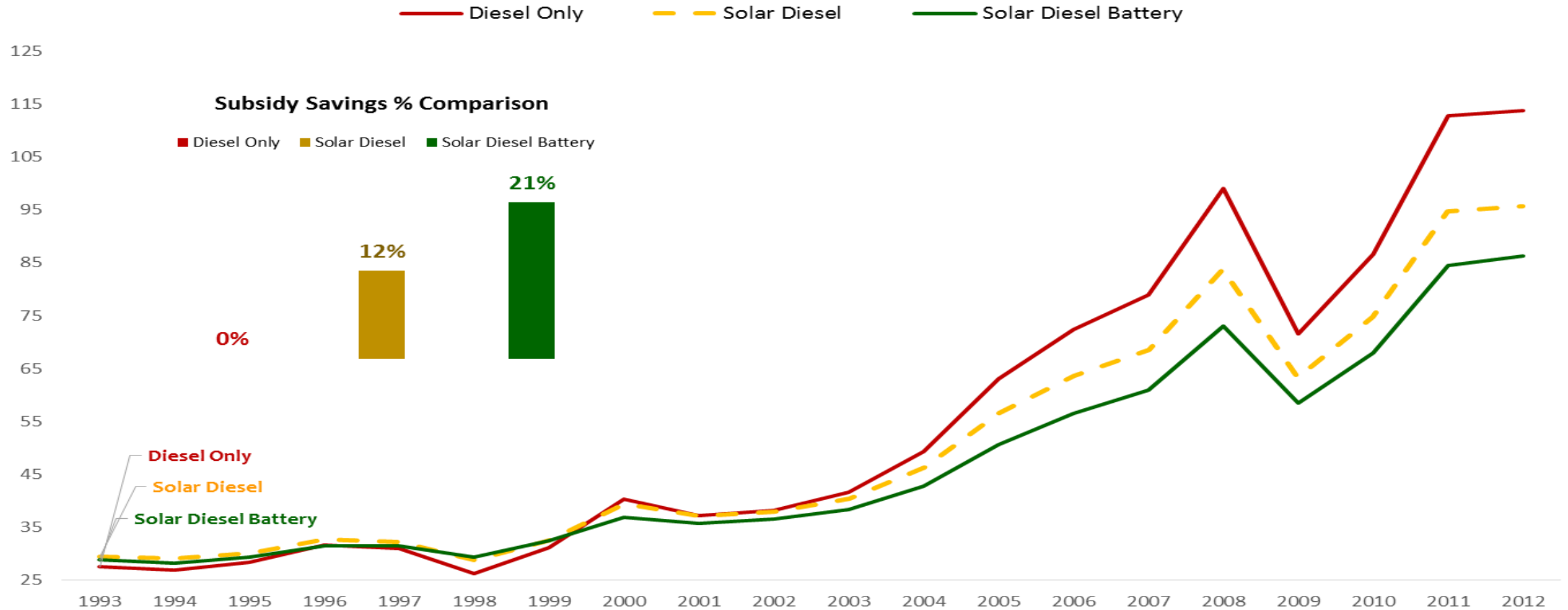
- Long-term continuity
 - 25+ year Project Cycle
 - Regulatory Consistency + Sanctity of Contracts
 - Labor force alignment
- Strong local government support
 - One stop shop: Permits & ROW access
 - Endorsements to National Government
 - Stakeholder Engagement
- Market growth
 - Population
 - Industrial Locators
 - Tourism



The Hybrid Plant saves the most!

If the plant was built 20 years ago

FCRR Evolution 1993-2012 (Actual Historical Data)



Construction Timeline

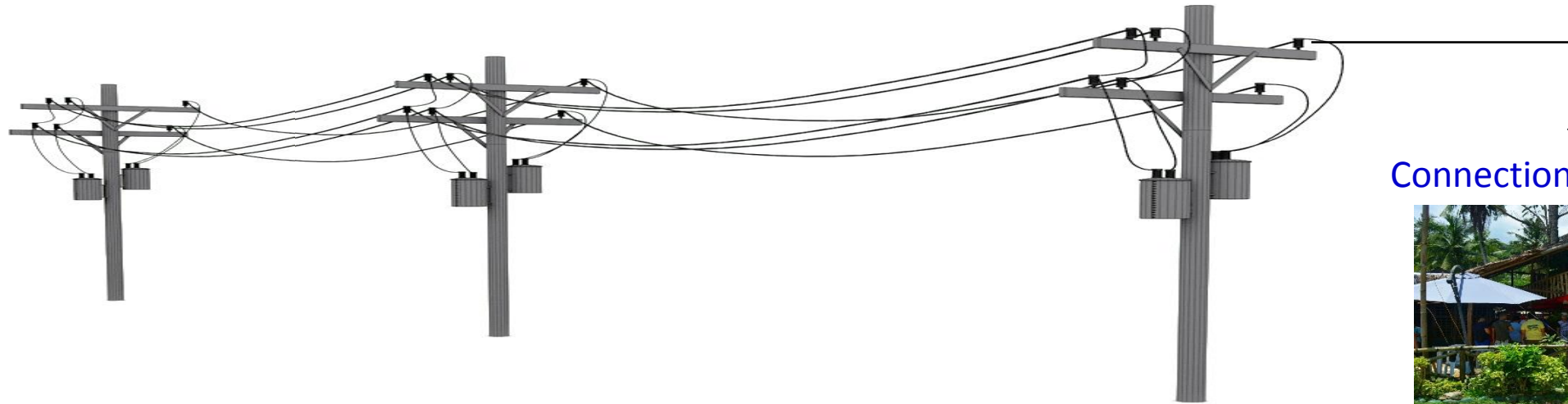
Shortest Possible

Government
Endorsements

3 months

6 months

7 months



Connection completed



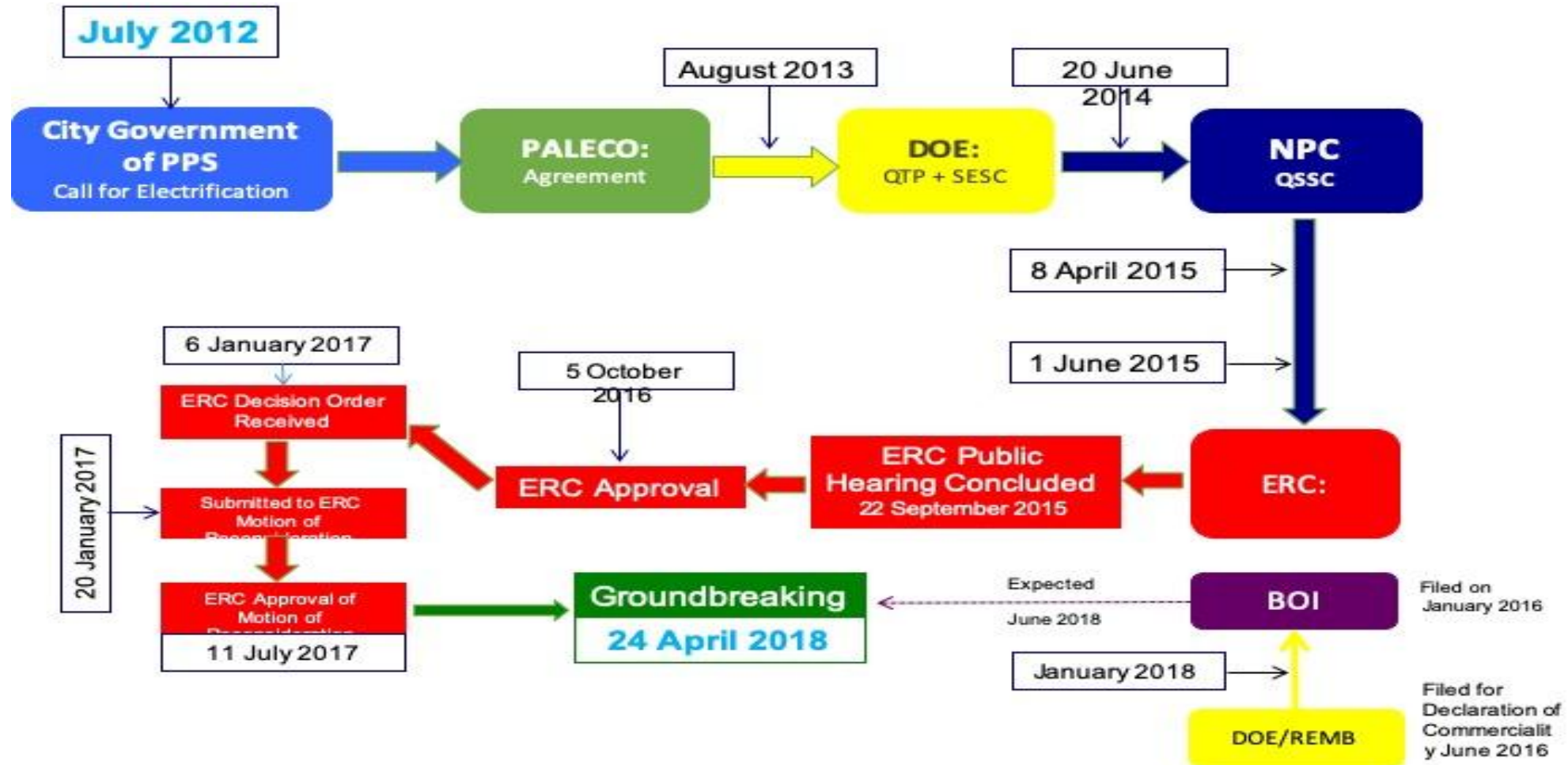
Philippine Law: Qualified Third Party (QTP)

What is a QTP?

Under Section 59 of Republic Act No. 9136, otherwise known as the Electric Power Industry Reform Act of 2001 (EPIRA) and Rule 14 of its Implementing Rules and Regulations (IRR), the provision of electric service in remote and unviable areas that a distribution utility is unable to service shall be opened to Qualified Third Parties such that stable and reliable electricity service can be provided to the local community (residents & businesses).

Electric Utility; i.e., PLN would need to declare Panlaitan area 'unviable' and open up for a QTP

Current Experience



Upside

- Ease of Doing Business Act
- EVOSS Act
- DOE Circular 2019-11-0015
- S.B. No. 175

Disclaimer

This presentation has been prepared by WEnergy Global Pte. Ltd. for informational purposes only.

The information and opinions contained in this presentation are not intended to be the sole basis upon which the implementation of the operation contemplated herein (the “Operation”) can be decided. It is therefore advisable for the recipient(s) to make its/their own judgment and assessment of the information and the Operation contained in this presentation.

Opinions expressed herein reflect the judgment of WEnergy Global Pte. Ltd. as of the date of this presentation and may be subject to change without notice if WEnergy Global Pte. Ltd. becomes aware of any information, whether specific to the Operation or general, which may have a material impact on any such opinions.

WEnergy Global Pte. Ltd. will not be responsible for any consequences resulting from the use of this presentation as well as the reliance upon any opinion or statement contained herein or for any omission.

This presentation is confidential and may not be reproduced (in whole or in part) nor summarized or distributed without the prior written permission of WEnergy Global Pte. Ltd. The recipient(s) of this report agree(s) to keep its content strictly confidential and undertake(s) not to disclose the information contained herein to any person other than those of its/their employees who strictly need access to it for the purpose of the Operation.

Thank you!

