

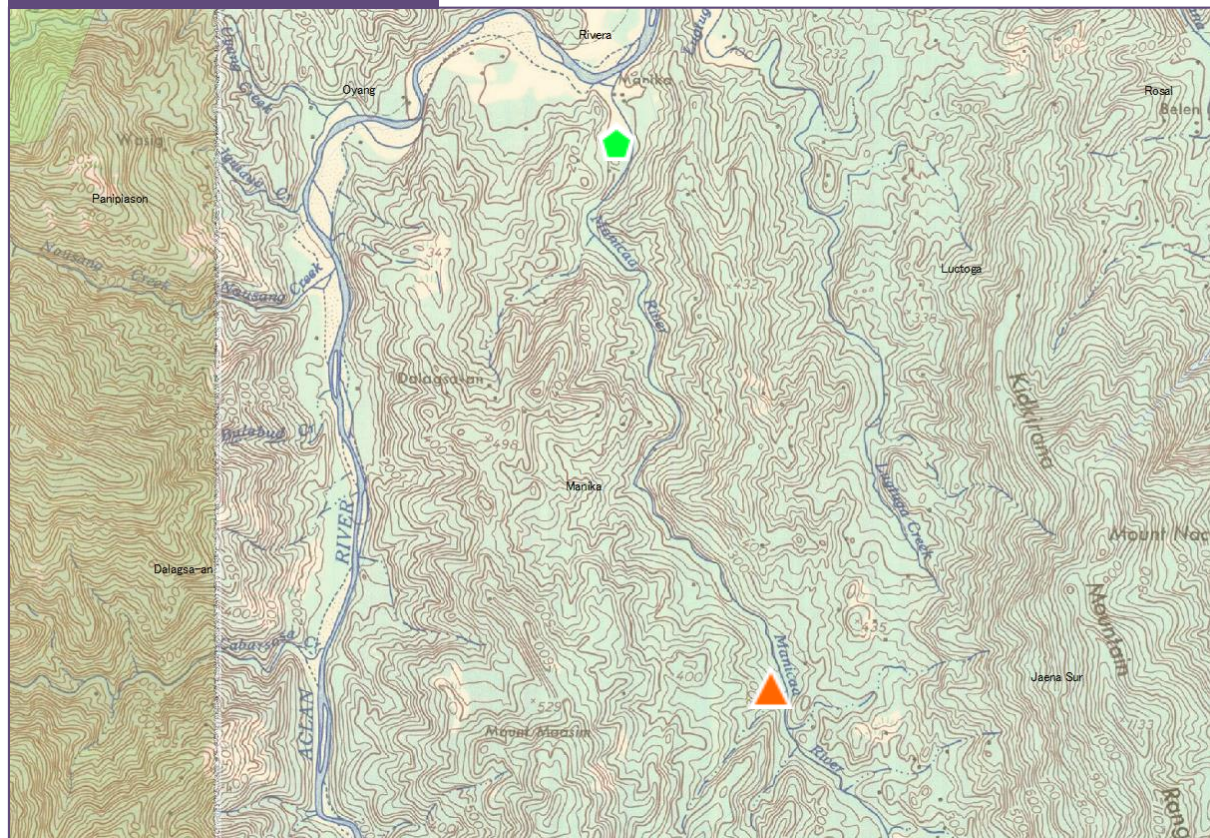
# HYDROPOWER PRE-DETERMINED AREAS

## AREA NO. 10 - AKLAN RIVER LOWER EAST TRIBUTARY

### PROFILE

**Project Name** : Aklan River Lower East Tributary  
**Potential Capacity** : 1.8MW  
**Type** : Run of river  
**River Source** : Manika  
**Location**  
**Region** : Western Visayas Region (VI)  
**Province** : Aklan  
**Municipality** : Libacao  
**Coordinates**  
**Weir/Dam** : 11° 20' 48.57" N, 122° 17' 20.45" E  
**Powerhouse** : 11° 23' 04.83" N, 122° 16' 43.56" E  
**Catchment Area** : 20.04km<sup>2</sup>  
**Effective Head** : 90m  
**Discharge** : 2.55m<sup>3</sup>/s  
**Remarks** : At the time of the study, the project was found not financially viable.

### LOCATION MAP



# HYDROPOWER PRE-DETERMINED AREAS

## ➤ AREA NO. 10 - AKLAN RIVER LOWER EAST TRIBUTARY

### BACKGROUND

- The Hydropower Service Contract (HSC) which previously covered the development of the project was awarded on 02 February 2010 and was eventually terminated on 26 August 2014.
- The HSC expired on its own term due to the failure of the RE Developer to declare the commerciality of the project within the prescribed period and apply for the conversion from pre-development to development stage. The RE Developer likewise failed to submit the necessary permits.
- The Feasibility Study and Outline Engineering Design were undertaken by Vergel<sup>3</sup> Consult in 2013.

